



**LOGISTICS<sup>®</sup>**  
PROPERTY  
CO

# 2700 YORK ROAD

Elk Grove Village, IL  
DuPage County

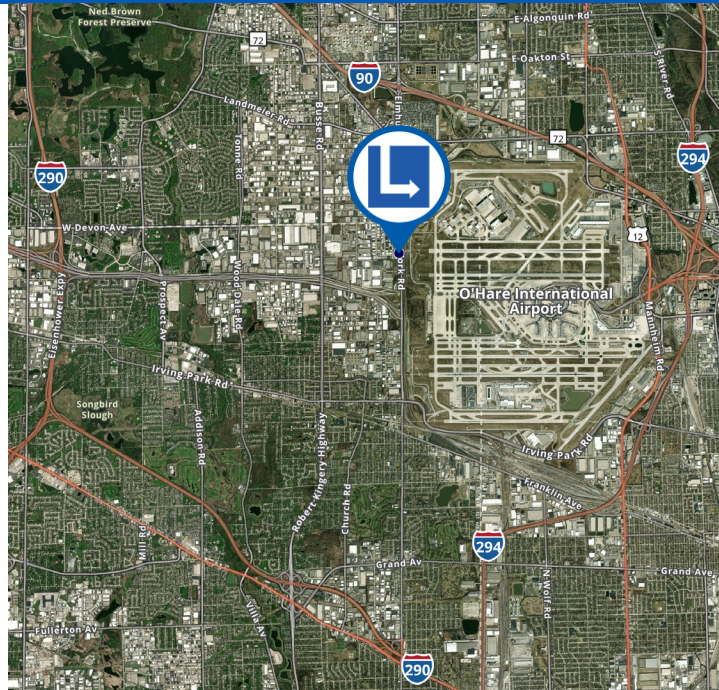


**122,470 SF (DIVISIBLE) | DELIVERING Q1 2026**

- Site Size: +/-5.9 Acres
- Office Size: 2,025 SF (can be expanded)
- Loading: 16 Docks, 2 Drive-in-doors
- Clear Height: 32'
- Parking: 125 Cars
- Sprinkler System: ESFR

### Property Highlights

- Low Dupage County real estate taxes
- 5 minutes from O'Hare South Cargo Terminal
- Immediate access to I-90/I-294 and IL-390/IL-490
- Located within O'Hare/DuPage County with access to an excellent labor pool



### Colliers

6250 N River Road  
Suite 11-100  
Rosemont, IL 60018

### Jonathan Kohn

+1 847 698 8279 • [jonathan.kohn@colliers.com](mailto:jonathan.kohn@colliers.com)

### John D'Orazio

+1 847 384 2823 • [john.dorazio@colliers.com](mailto:john.dorazio@colliers.com)



**LOGISTICS<sup>®</sup>**  
PROPERTY  
CO

# 2700 YORK ROAD

Elk Grove Village, IL  
DuPage County



**Colliers**  
6250 N River Road  
Suite 11-100  
Rosemont, IL 60018

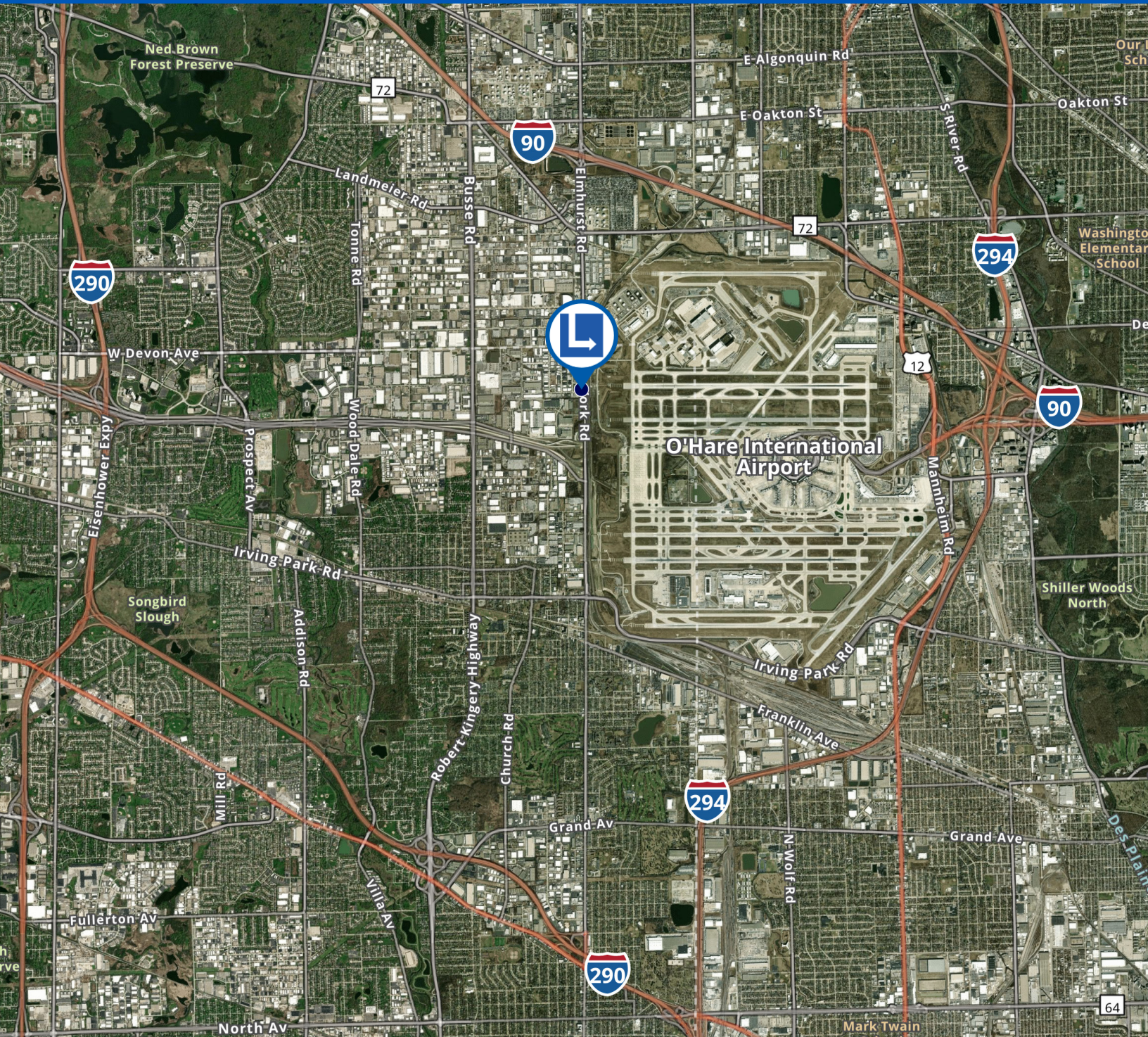
**Jonathan Kohn**  
+1 847 698 8279 • [jonathan.kohn@colliers.com](mailto:jonathan.kohn@colliers.com)  
**John D'Orazio**  
+1 847 384 2823 • [john.dorazio@colliers.com](mailto:john.dorazio@colliers.com)



**LOGISTICS<sup>®</sup>**  
PROPERTY  
CO

# 2700 YORK ROAD

Elk Grove Village, IL  
DuPage County



**Colliers**  
6250 N River Road  
Suite 11-100  
Rosemont, IL 60018

**Jonathan Kohn**  
+1 847 698 8279 • [jonathan.kohn@colliers.com](mailto:jonathan.kohn@colliers.com)  
**John D'Orazio**  
+1 847 384 2823 • [john.dorazio@colliers.com](mailto:john.dorazio@colliers.com)

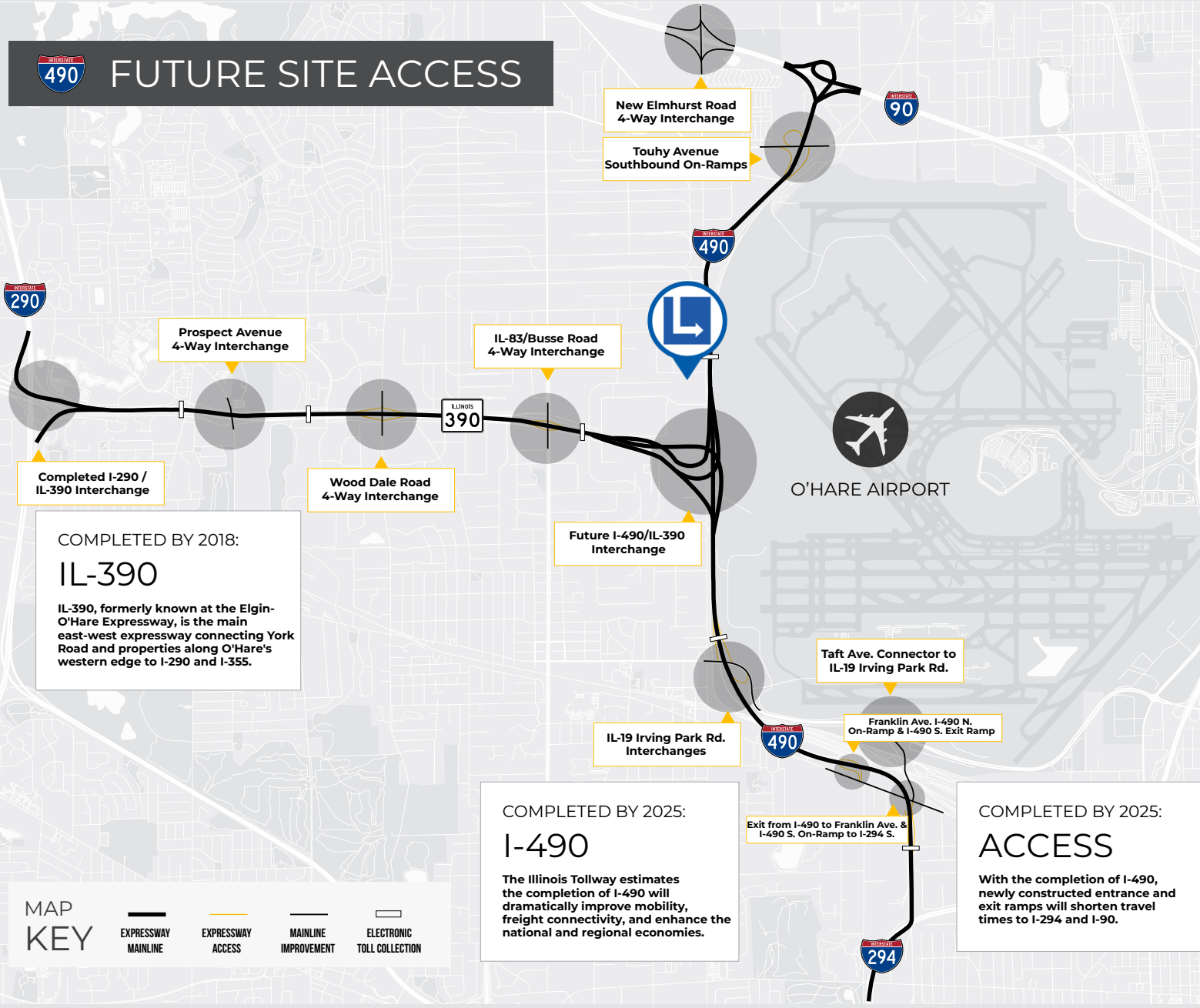


**LOGISTICS<sup>®</sup>**  
PROPERTY  
CO

# 2700 YORK ROAD

Elk Grove Village, IL  
DuPage County

## FUTURE SITE ACCESS



COMPLETED BY 2018:  
**IL-390**  
IL-390, formerly known as the Elgin-O'Hare Expressway, is the main east-west expressway connecting York Road and properties along O'Hare's western edge to I-290 and I-355.

COMPLETED BY 2025:  
**I-490**  
The Illinois Tollway estimates the completion of I-490 will dramatically improve mobility, freight connectivity, and enhance the national and regional economies.

COMPLETED BY 2025:  
**ACCESS**  
With the completion of I-490, newly constructed entrance and exit ramps will shorten travel times to I-294 and I-90.



O'HARE AIRPORT

**MAP KEY**

- EXPRESSWAY MAINLINE
- EXPRESSWAY ACCESS
- MAINLINE IMPROVEMENT
- ELECTRONIC TOLL COLLECTION



**Colliers**  
6250 N River Road  
Suite 11-100  
Rosemont, IL 60018

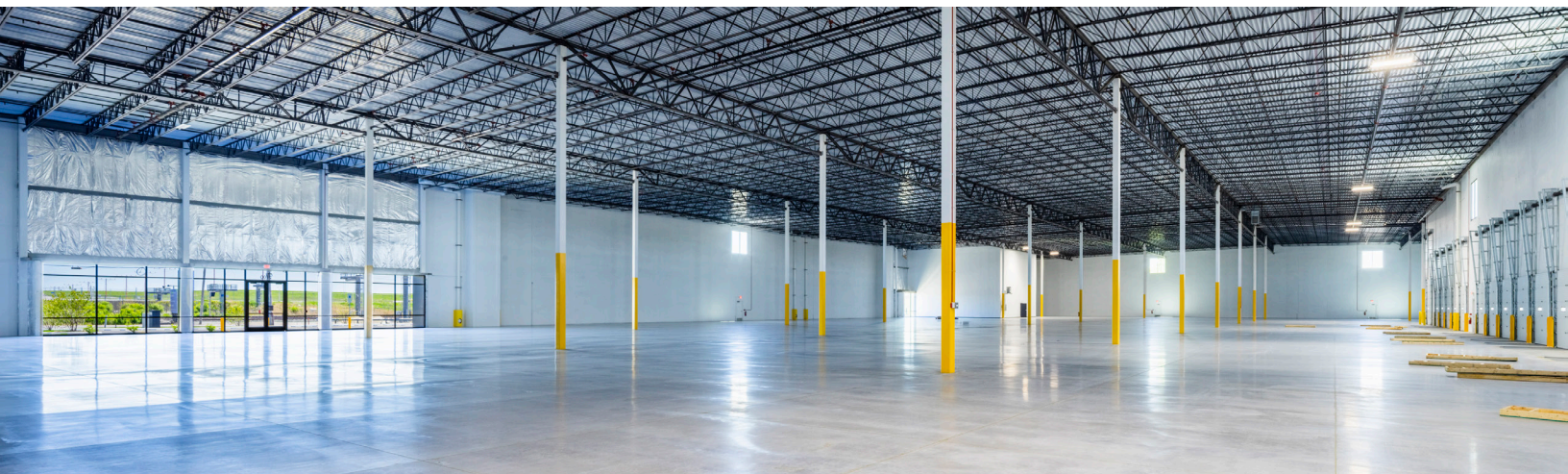
**Jonathan Kohn**  
+1 847 698 8279 • [jonathan.kohn@colliers.com](mailto:jonathan.kohn@colliers.com)  
**John D'Orazio**  
+1 847 384 2823 • [john.dorazio@colliers.com](mailto:john.dorazio@colliers.com)



**LOGISTICS<sup>®</sup>**  
PROPERTY  
CO

# 2700 YORK ROAD

Elk Grove Village, IL  
DuPage County



**Colliers**

6250 N River Road  
Suite 11-100  
Rosemont, IL 60018

**Jonathan Kohn**

+1 847 698 8279 • [jonathan.kohn@colliers.com](mailto:jonathan.kohn@colliers.com)

**John D'Orazio**

+1 847 384 2823 • [john.dorazio@colliers.com](mailto:john.dorazio@colliers.com)