



**LOGISTICS<sup>®</sup>**  
PROPERTY  
CO

# PALATINE 90 LOGISTICS CENTER

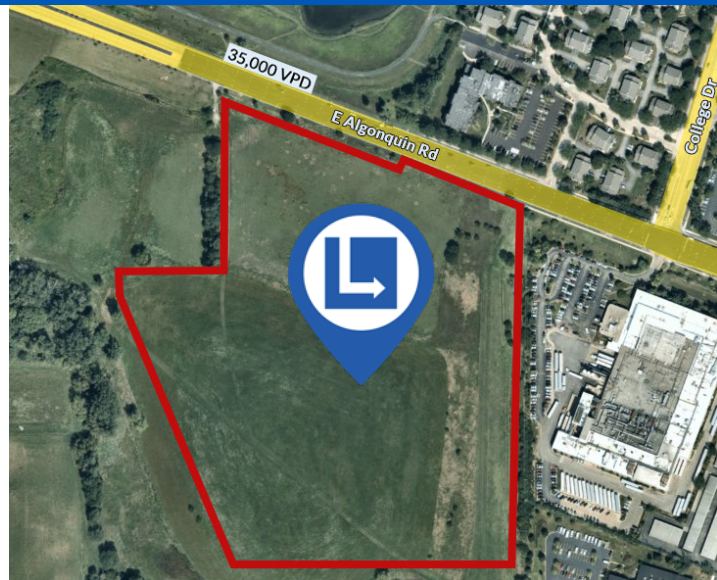
975 W. Algonquin Road, Palatine, IL 60173

**LEASED**



367,696 SF

- 28.5 acres
- 367,696 sf building
- 363 car parking stalls
- 36' clear height
- 60 exterior docks
- 2 overhead drive-in doors
- 70 trailer stalls
- 3,000 amps at 480v power
- Largest building in the area >300,000 sf
- 1 mile to I-90 and I-290/355/53 interchange
- 14 miles to O'Hare International Airport





**LOGISTICS**<sup>®</sup>  
PROPERTY  
CO

# PALATINE 90 LOGISTICS CENTER

975 W. Algonquin Road, Palatine, IL 60173

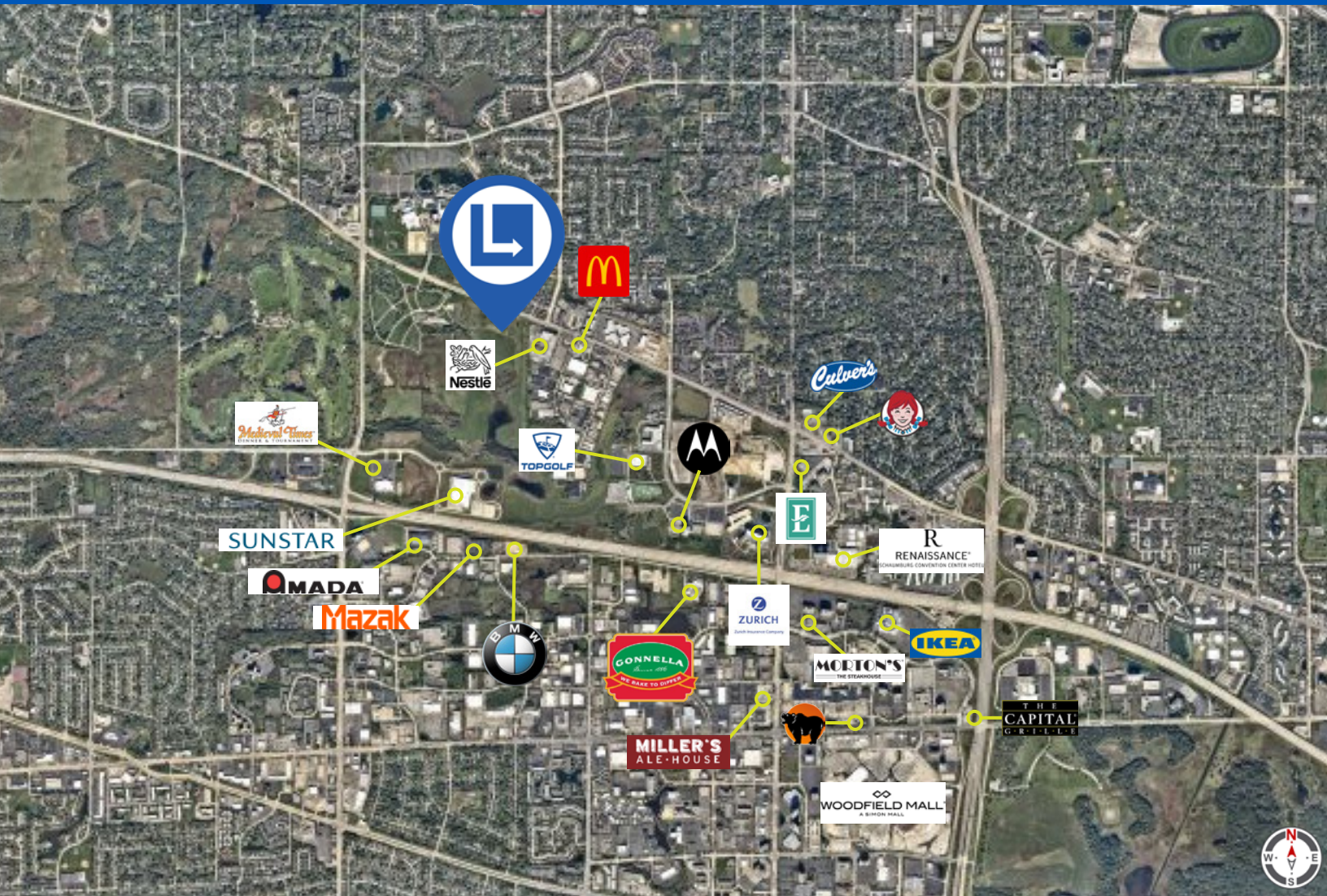




**LOGISTICS<sup>®</sup>**  
PROPERTY  
CO

# PALATINE 90 LOGISTICS CENTER

975 W. Algonquin Road, Palatine, IL 60173



## CORPORATE NEIGHBORS & TRAVEL TIMES



|                              |          |            |
|------------------------------|----------|------------|
| O'Hare International Airport | 14 miles | 17 minutes |
| Downtown Chicago             | 29 miles | 43 minutes |
| Midway Airport               | 33 miles | 55 minutes |
| Rockford Airport             | 61 miles | 56 minutes |