

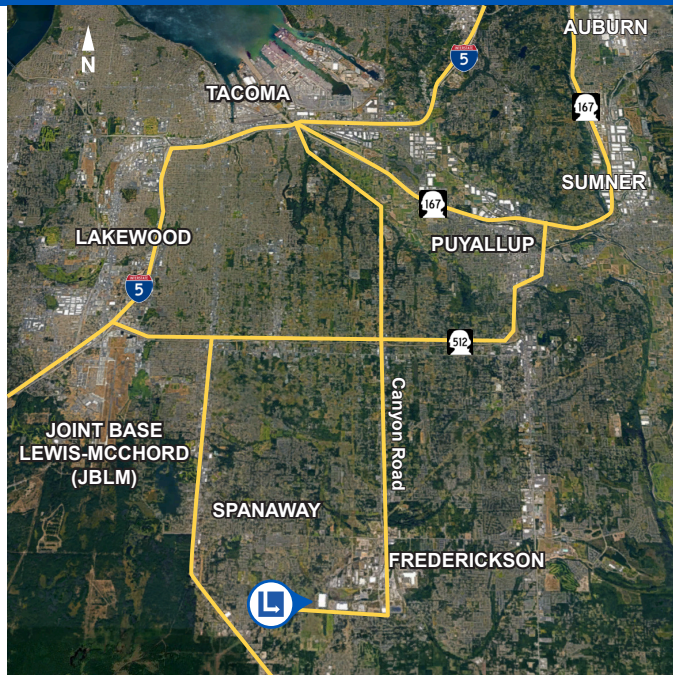


**LEASED**



## BUILDING 1

- 478,235 sf (divisible)
- Building dimensions: 420' x 1120'
- 24 acres
- Typical bay size of 50' x 56' with 60' speedbay
- 36' clear height
- 45 exterior loading docks 9' x 10'
- 2 drive-in doors 12' x 14'
- 332 auto stalls
- 110 trailer parks
- ESFR sprinkler system
- Building completion: May 2020



### APPROXIMATE DISTANCE

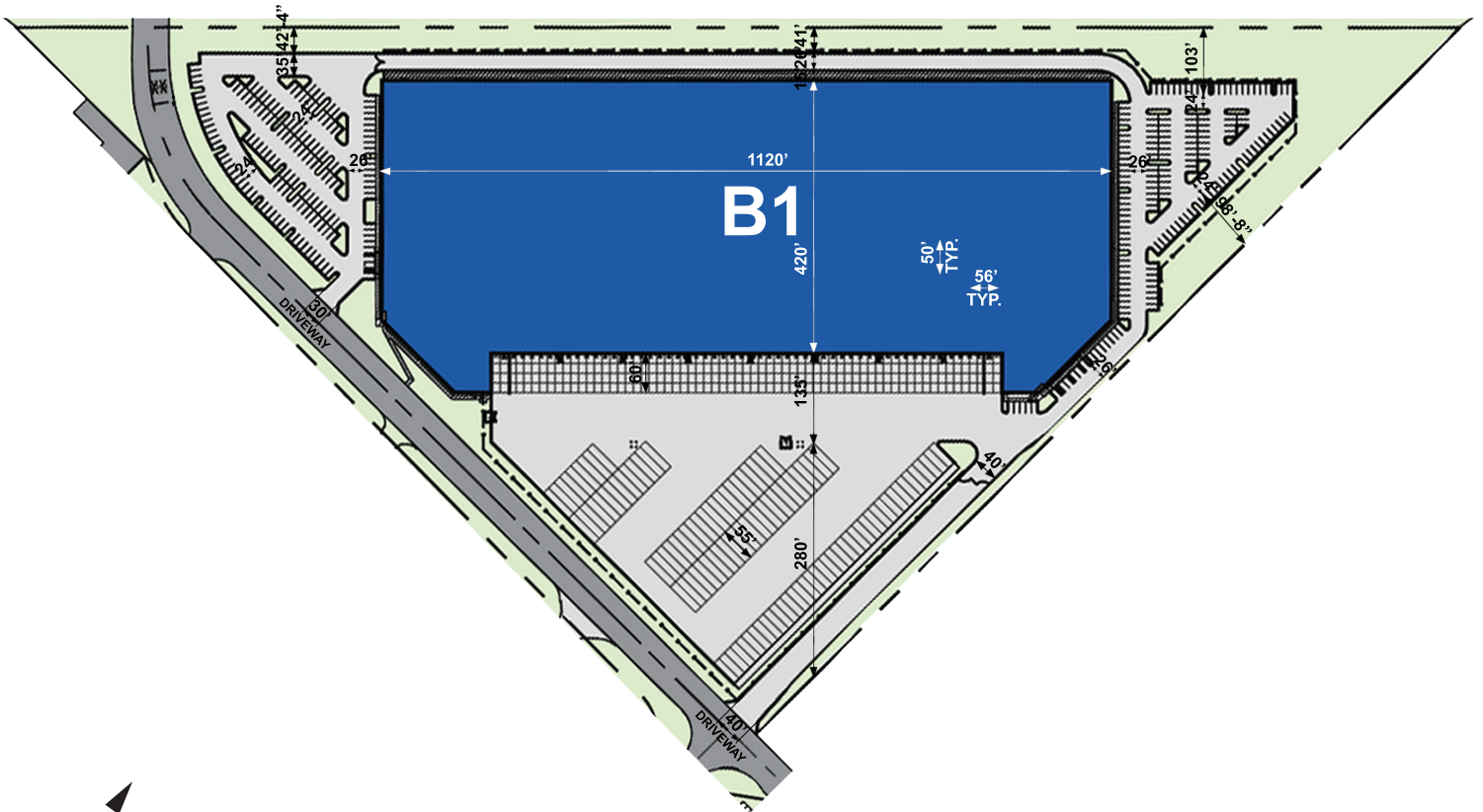
INTERSTATE 5	12.5 MI
PORT OF TACOMA	15 MI
SEATAC INT'L AIRPORT	35 MI
PORT OF SEATTLE	45 MI
PORTLAND	148 MI



**LOGISTICS<sup>®</sup>**  
PROPERTY  
CO

# FREDERICKSON ONE B1

38th Avenue East and 200th Street East, Spanaway, WA 98387  
fredericksonone.com



LEGEND WITH BLDG SF  
B1 = 478,235 SF