

LOGISTICS[®]
PROPERTY
CO

FREDERICKSON ONE B5 & B4

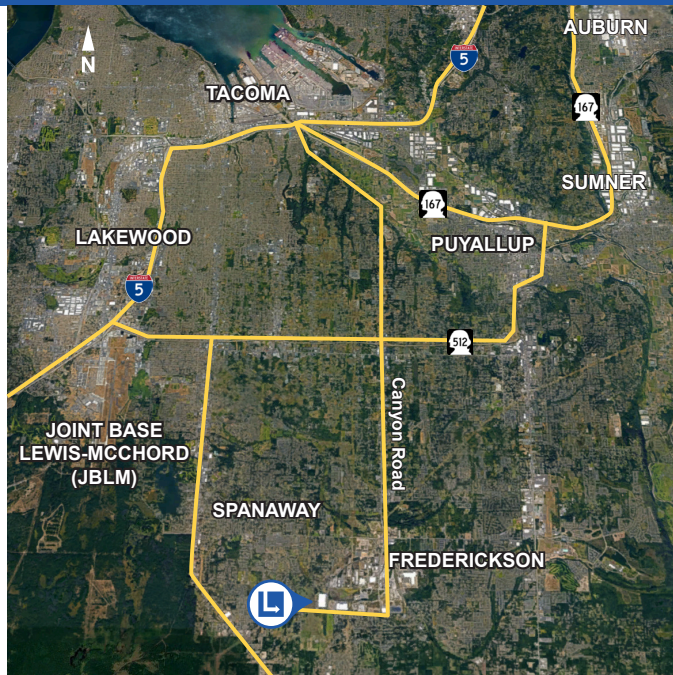
38th Avenue East and 200th Street East, Spanaway, WA 98387

LEASED



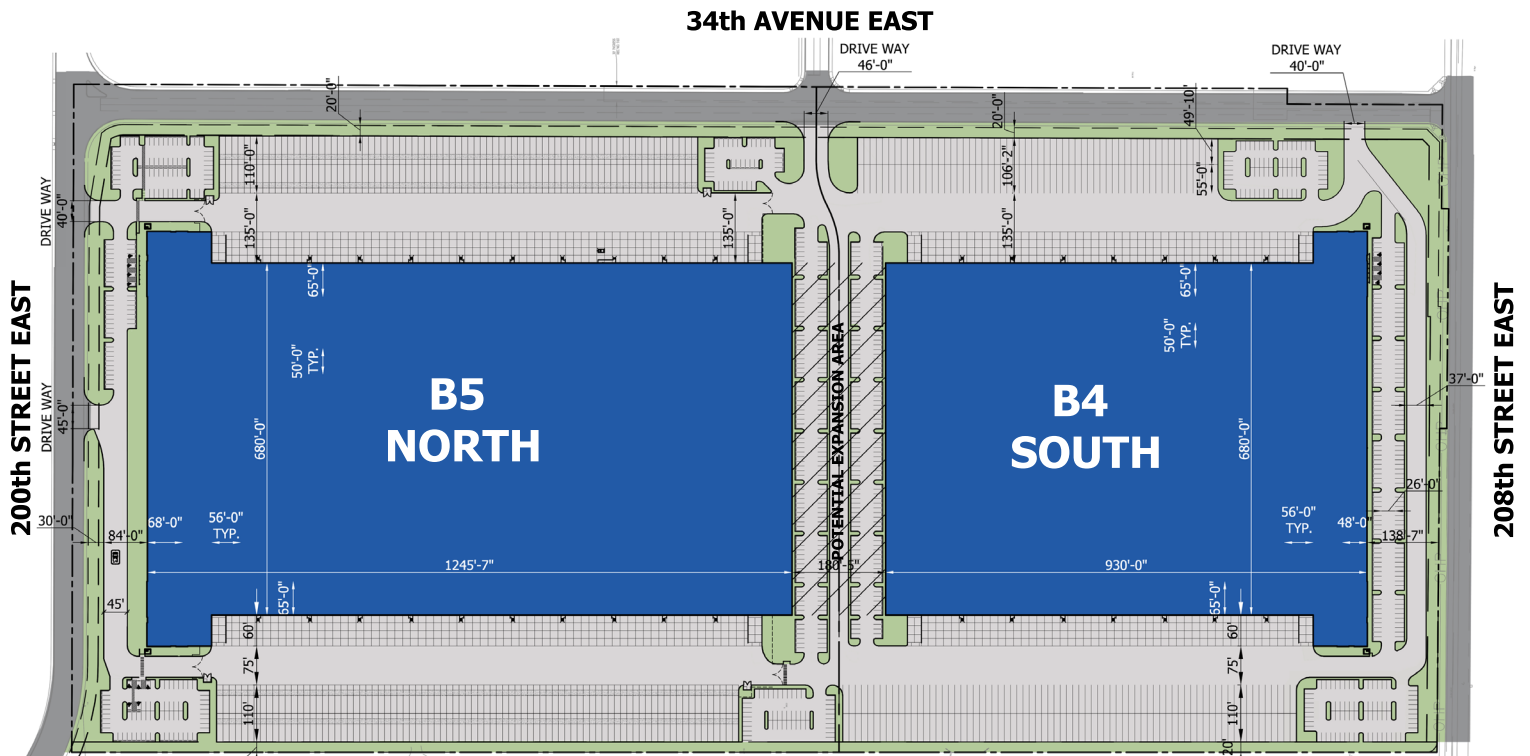
PROJECT INFORMATION

- 862,167 sf Building 5 completion May 2022 (expansion up to 1.63m sf)
- 42' clear height
- 9" unreinforced slab
- Fully entitled and zoned EC (Employment Center)
- EC zoning allows for heavy industrial, distribution or manufacturing
- Heavy power available
- 77 acres total
- Wide private roads for easy truck maneuvering
- Competitive drayage rates



APPROXIMATE DISTANCE

INTERSTATE 5	12.5 MI
PORT OF TACOMA	15 MI
SEATAC INT'L AIRPORT	35 MI
PORT OF SEATTLE	45 MI
PORTLAND	148 MI



BUILDING/SITE INFORMATION

Building	Size (sf)	Building Depth	Clear Height	Column Spacing	Slab	Dock Doors	Drive-in Doors	Truck Court	Parking	
									Car	Trailer
B5	862,167	680'	42'	50' x 56'	9"	130	4	245'	432	322
B4	645,151	680'	42'	50' x 56'	9"	90	4	245'	451	262
Expansion Area	122,697	680'	42'	TBD	9"	36	0	TBD	TBD	TBD