



LOGISTICS[®]
PROPERTY
CO

2800 WEST DIEHL ROAD

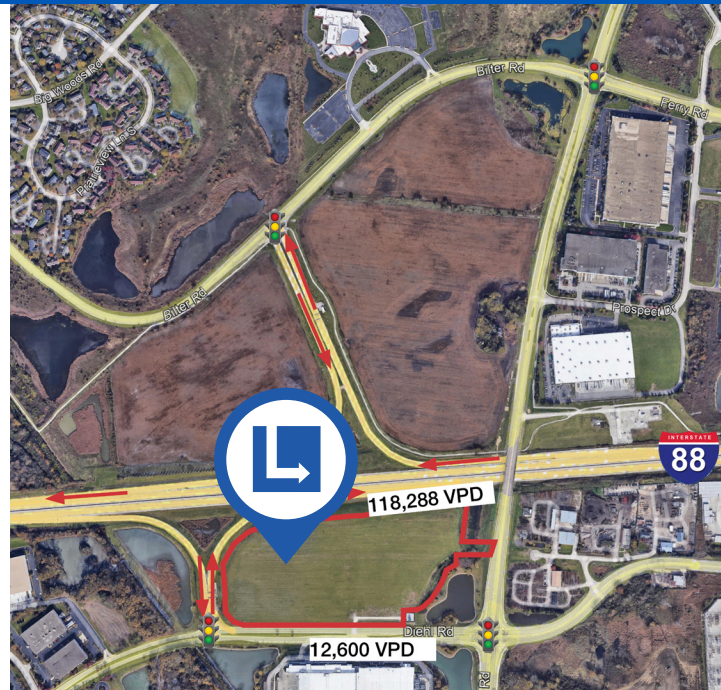
2800 West Diehl Road, Aurora, IL 60502

LEASED



392,973 SF (DIVISIBLE) • DELIVERING Q1 2023

- I-88's most prominent and visible industrial site with 1,300' of frontage on I-88
- Ideal headquarter location
- Immediate access to I-88 at Eola Road 4-way interchange
- 56 exterior docks
- 2 drive-in doors
- 26 trailer parking stalls
- 403 auto parking stalls
- 36' clear height
- Office-to-suit
- Functional site plan with dedicated truck drive lane

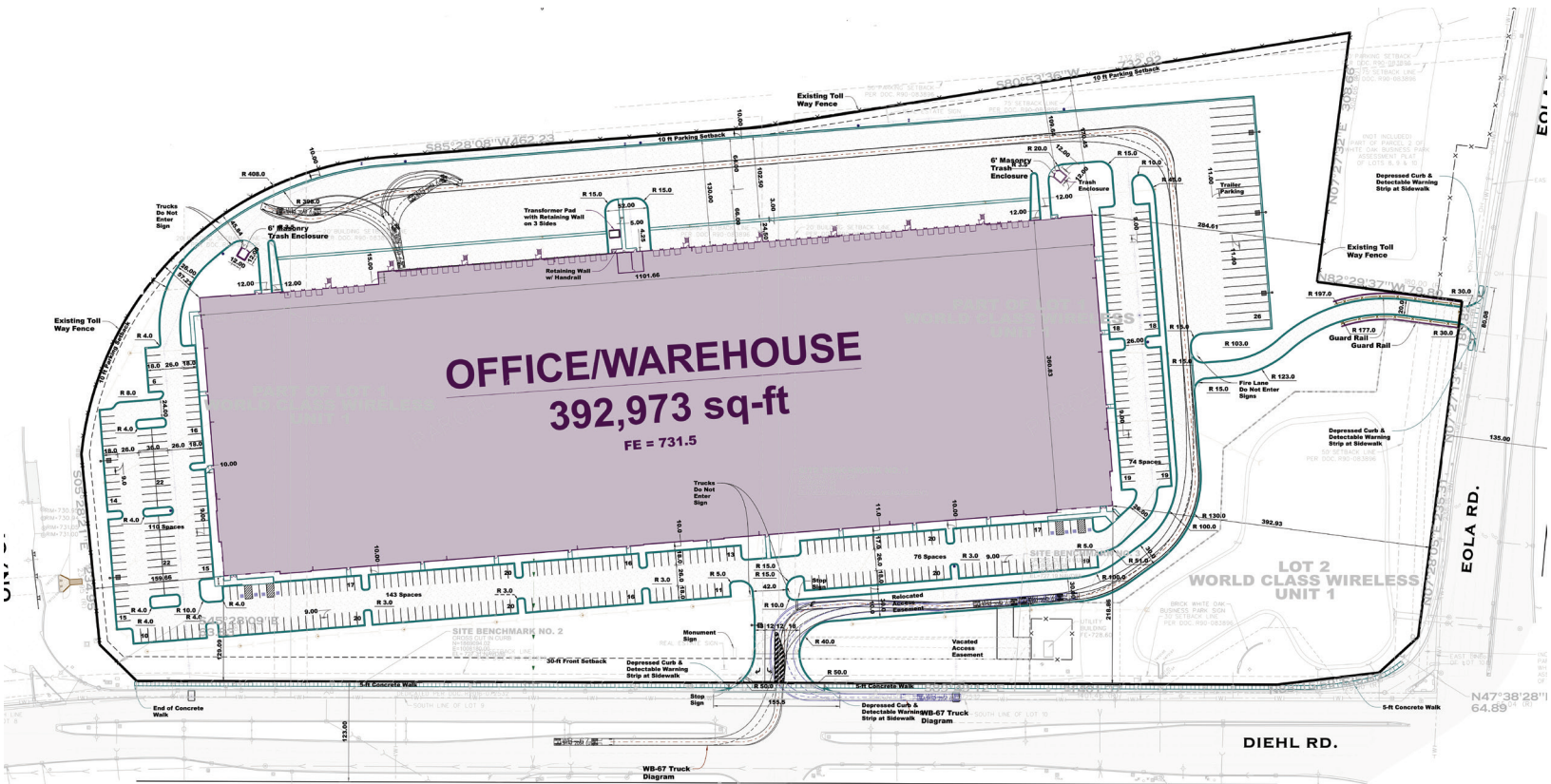




LOGISTICS[®]
PROPERTY
CO

2800 WEST DIEHL ROAD

2800 West Diehl Road, Aurora, IL 60502



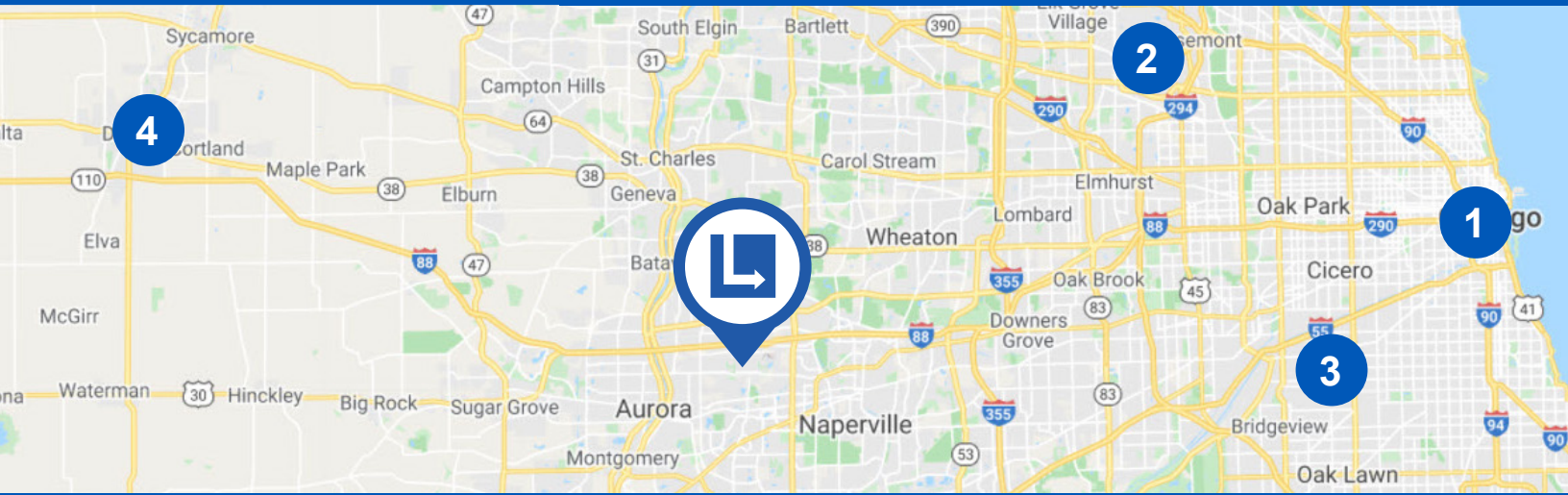
WORLD CLASS WIRELESS UNIT 1
 SITE AREA 1.08720 ± s.f.



LOGISTICS[®]
PROPERTY
CO

2800 WEST DIEHL ROAD

2800 West Diehl Road, Aurora, IL 60502



1	Chicago	44 minutes	35 miles
2	O'Hare Airport	29 minutes	30 miles
3	Midway Airport	42 minutes	37 miles
4	DeKalb	33 minutes	32 miles



Miles	Est. Population	Est. Households	Est. Average Income	Est. Daytime Population
1 Mile	3,712	1,296	\$153,294	8,162
3 Miles	57,544	23,061	\$103,465	53,007
5 Miles	200,232	71,968	\$94,054	127,695