



LOGISTICS[®]
PROPERTY
CO

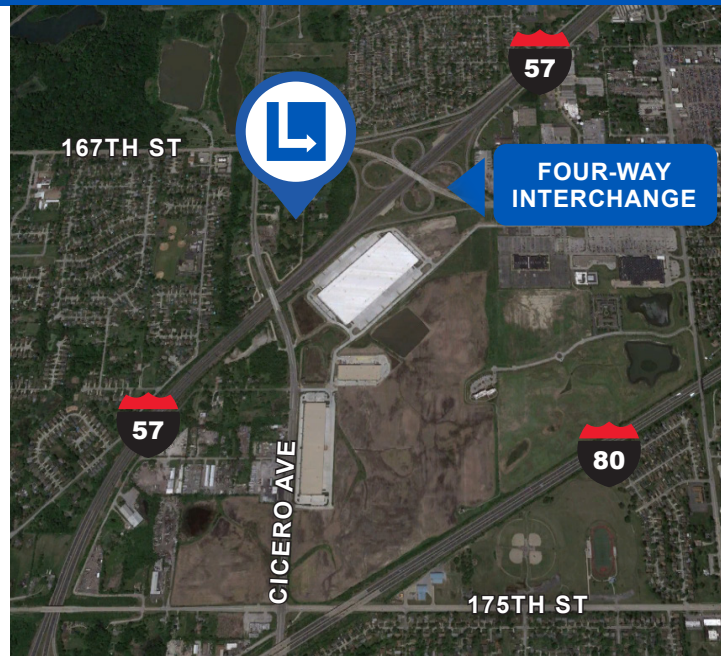
OAK FOREST LOGISTICS CENTER

16799 Cicero Avenue, Oak Forest, IL 60477



664,453 SF AVAILABLE FOR LEASE • BUILDING 100% COMPLETE

- Immediate access to I-57 four-way interchange
- 2 miles to I-80
- 3 miles to I-294
- 24 miles to Downtown Chicago
- Highly desirable infill location
- Zoning allows for a wide variety of uses
- Remarkable access to skilled labor force
- I-57 frontage - 89,500 cars per day
- TIF & Class 8 Tax Abatement
- Cal-Sag Enterprise Zone



Cushman & Wakefield

9500 W. Bryn Mawr
Suite 600
Rosemont, IL 60018

Jason West, SIOR

+1 847 518 3210 • jason.west@cushwake.com

Sean Henrick, SIOR

+1 847 518 3215 • sean.henrick@cushwake.com

Ryan Klink

+1 847 518 3211 • ryan.klink@cushwake.com



LOGISTICS[®]
PROPERTY
CO

OAK FOREST LOGISTICS CENTER

16799 Cicero Avenue, Oak Forest, IL 60477



664,453 SF
(DIVISIBLE
TO 200,000 SF)



1,835 SF
SPEC
OFFICE



40'
CLEAR
HEIGHT



117
EXTERIOR
DOCKS



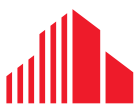
4
DRIVE-IN
DOORS



116
TRAILER
PARKING



509
CAR
PARKING



**CUSHMAN &
WAKEFIELD**

Cushman & Wakefield

9500 W. Bryn Mawr
Suite 600
Rosemont, IL 60018

Jason West, SIOR

+1 847 518 3210 • jason.west@cushwake.com

Sean Henrick, SIOR

+1 847 518 3215 • sean.henrick@cushwake.com

Ryan Klink

+1 847 518 3211 • ryan.klink@cushwake.com

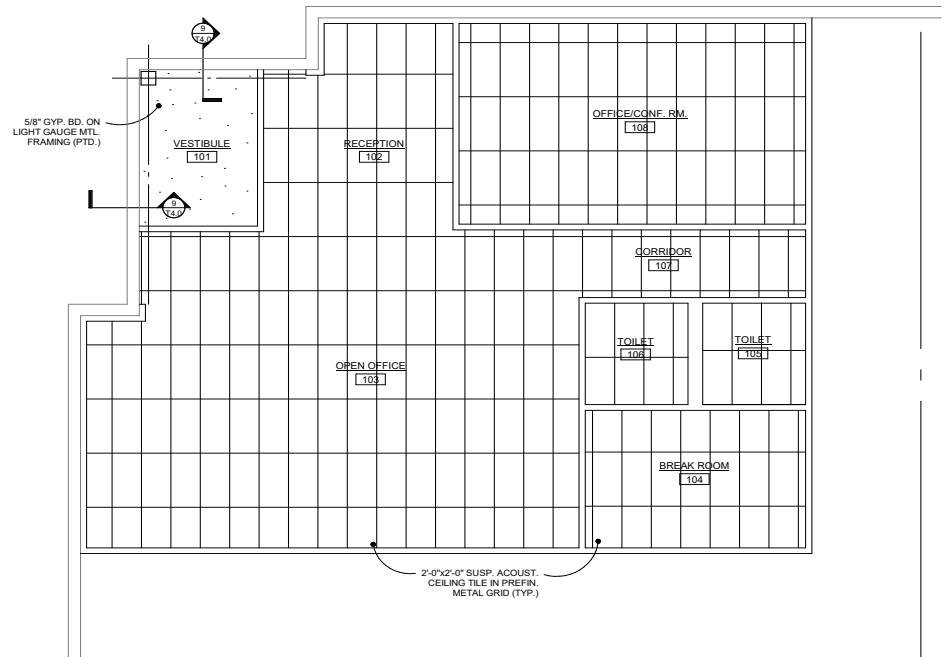
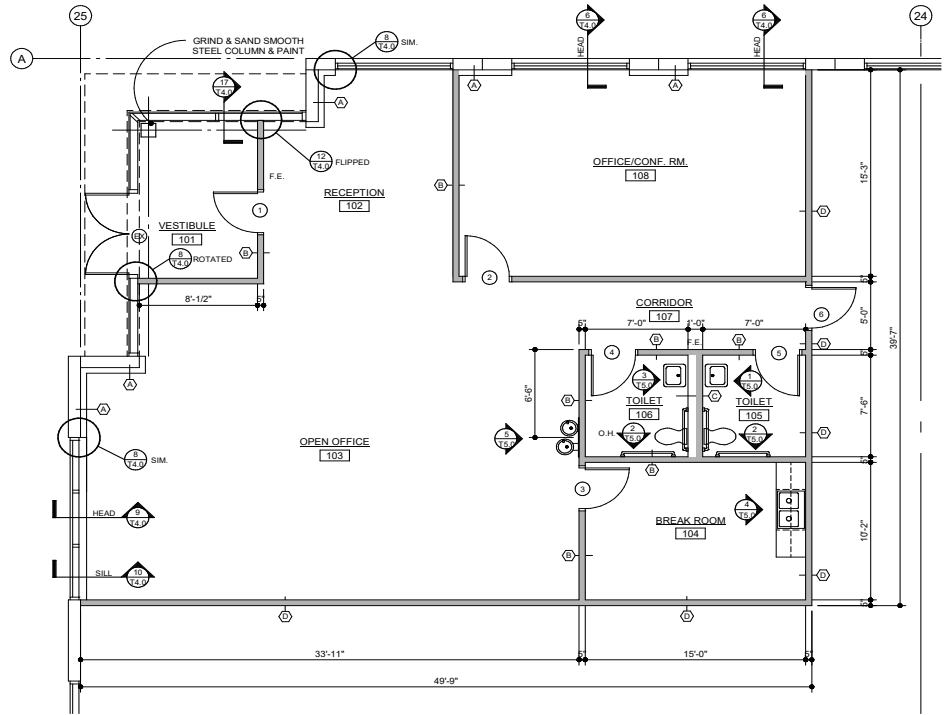


LOGISTICS
PROPERTY
CO

OAK FOREST LOGISTICS CENTER

16799 Cicero Avenue, Oak Forest, IL 60477

SPEC OFFICE PLAN



CUSHMAN & WAKEFIELD

Cushman & Wakefield

9500 W. Bryn Mawr
Suite 600
Rosemont, IL 60018

Jason West, SIOR

+1 847 518 3210 • jason.west@cushwake.com

Sean Henrick, SIOR

+1 847 518 3215 • sean.henrick@cushwake.com

Ryan Klink

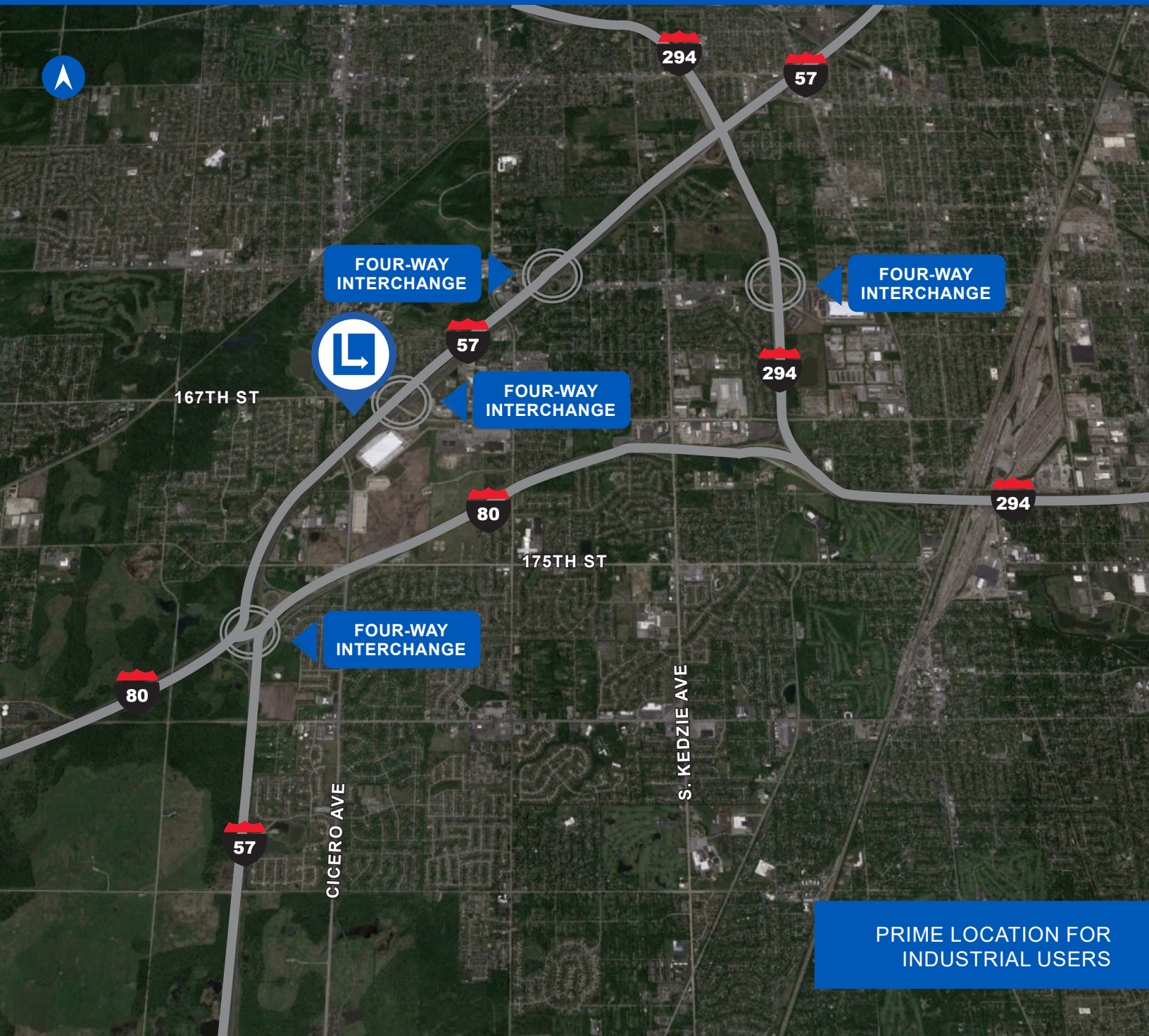
+1 847 518 3211 • ryan.klink@cushwake.com



LOGISTICS[®]
PROPERTY
CO

OAK FOREST LOGISTICS CENTER

16799 Cicero Avenue, Oak Forest, IL 60477



PRIME LOCATION FOR INDUSTRIAL USERS



CUSHMAN & WAKEFIELD

Cushman & Wakefield

9500 W. Bryn Mawr
Suite 600
Rosemont, IL 60018

Jason West, SIOR

+1 847 518 3210 • jason.west@cushwake.com

Sean Henrick, SIOR

+1 847 518 3215 • sean.henrick@cushwake.com

Ryan Klink

+1 847 518 3211 • ryan.klink@cushwake.com