



LOGISTICS[®]
PROPERTY
CO

FIRST STATE LOGISTICS PARK

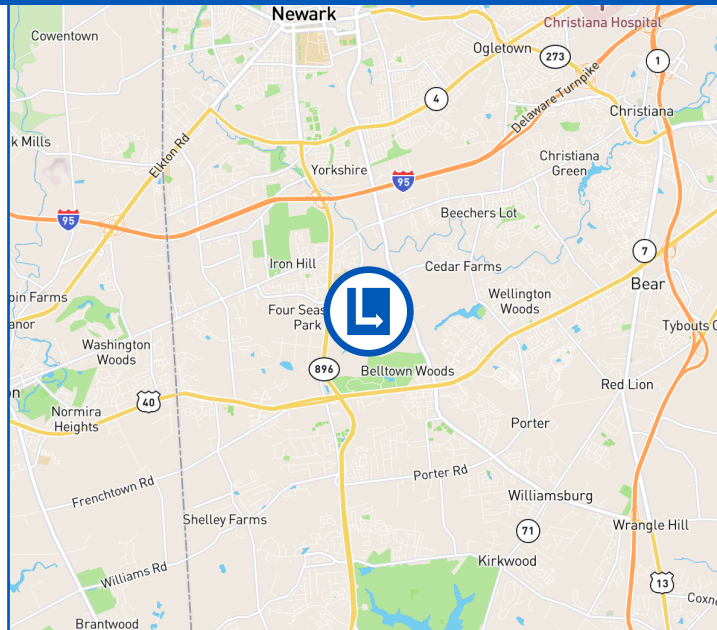
700 Dusk Run Road, Newark, Delaware 19702

www.firststatelogisticspark.com



BUILDING F - 408,000 SF AVAILABLE

- Located in the heart of the I-95 corridor between NYC and Washington, DC
- Immediate access to I-95 (1.5 miles)
- Abundant labor force within the region drawing from Delaware, New Jersey, Pennsylvania, and Maryland
- Access to one-third of the US population within a one-day drive
- Modern industrial buildings
- Access to three ports within a one-hour drive (Wilmington, Philadelphia, and Baltimore)
- Secure, park-like setting with a lake on the property
- Ready for tenant improvements



CBRE

CBRE, Inc.
 3711 Kennett Pike, Suite 210
 Wilmington, DE 19807

Dan Rattay

+1 302 661 6702 • dan.rattay@cbre.com

Paul Touhey

+1 610 251 5126 • paul.touhey@cbre.com



LOGISTICS[®]
PROPERTY
CO

FIRST STATE LOGISTICS PARK

700 Dusk Run Road, Newark, Delaware 19702

www.firststatelogisticspark.com



PROPERTY HIGHLIGHTS

Building F – 408,000 SF Available

- Type: Tilt wall, single load/rear load
- Dimensions: 1,120' (w) x 400' (d)
- Clear Height: 40'
- Column Spacing: 54' x 48'
- Speed Bay: 60'
- Floor: 8" slab
- Sprinkler: ESFR
- Loading: 55 dock doors, 2 drive-in doors
- Parking: 120 trailers spots, 216 auto spots



CBRE

CBRE, Inc.
3711 Kennett Pike, Suite 210
Wilmington, DE 19807

Dan Rattay

+1 302 661 6702 • dan.rattay@cbre.com

Paul Touhey

+1 610 251 5126 • paul.touhey@cbre.com



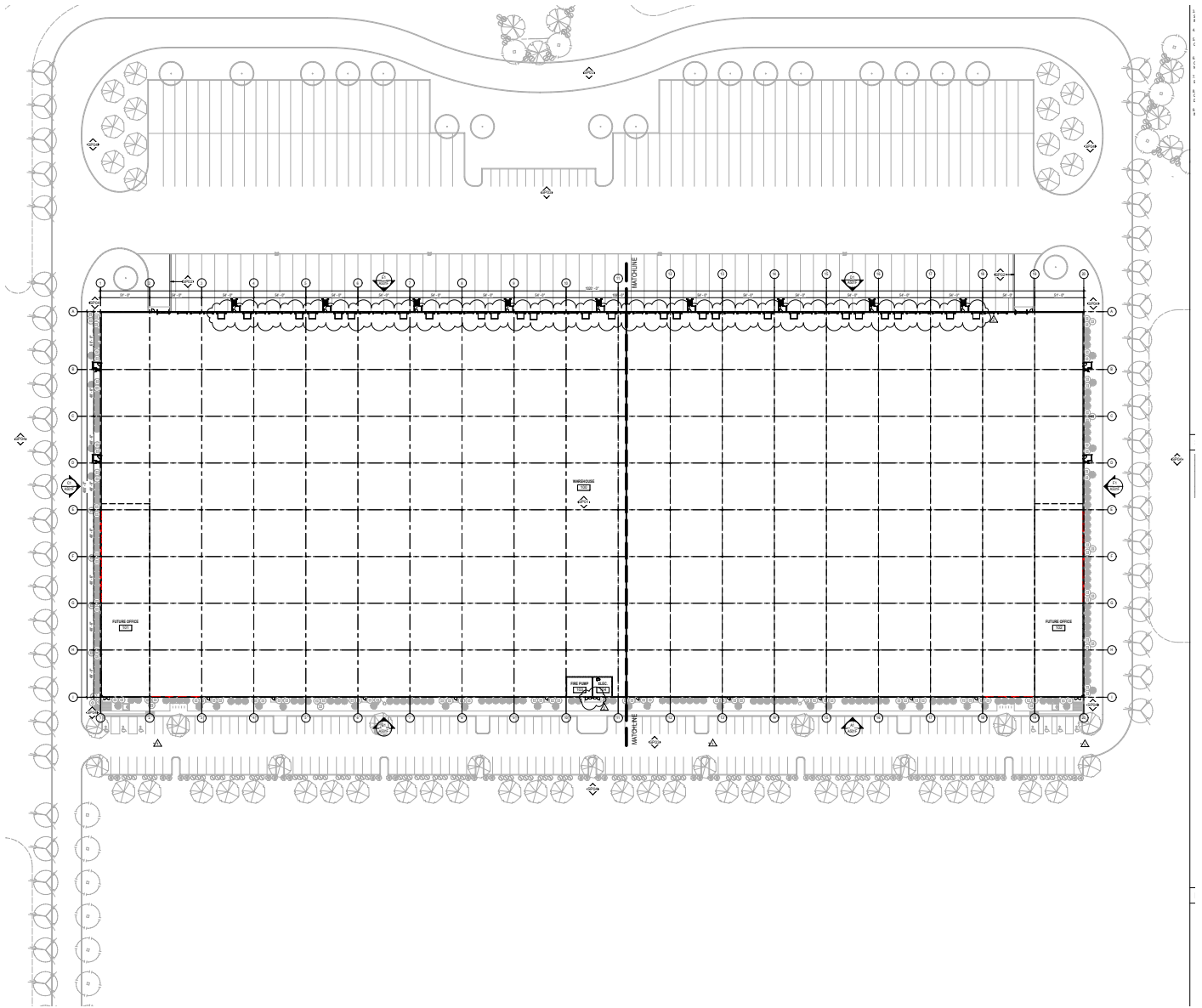
LOGISTICS®
PROPERTY
CO

FIRST STATE LOGISTICS PARK

700 Dusk Run Road, Newark, Delaware 19702

www.firststatelogisticspark.com

Building F – 408,000 SF Available



CBRE

CBRE, Inc.
3711 Kennett Pike, Suite 210
Wilmington, DE 19807

Dan Rattay

+1 302 661 6702 • dan.rattay@cbre.com

Paul Touhey

+1 610 251 5126 • paul.touhey@cbre.com

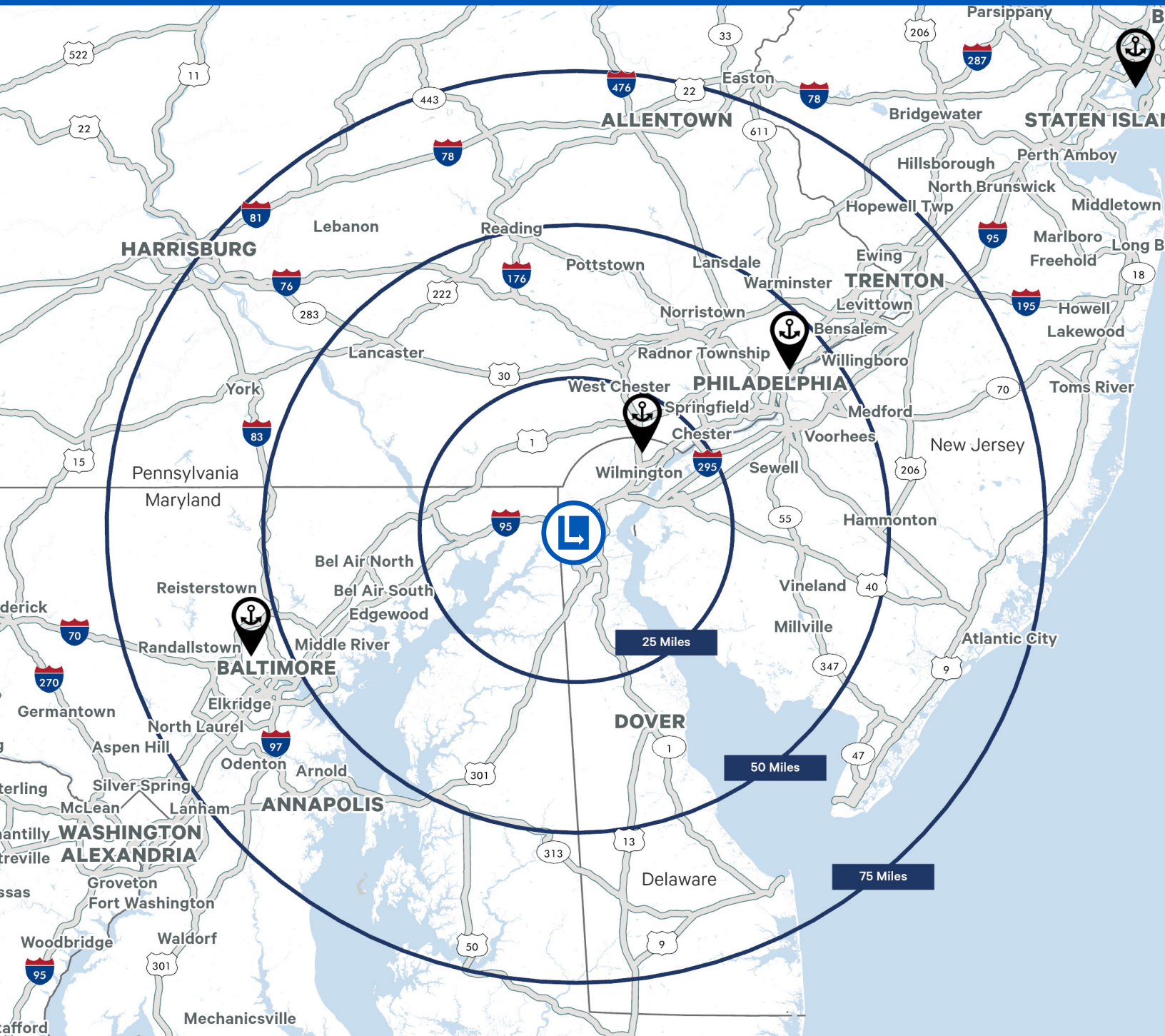


LOGISTICS[®]
PROPERTY
CO

FIRST STATE LOGISTICS PARK

700 Dusk Run Road, Newark, Delaware 19702

www.firststatelogisticspark.com



CBRE

CBRE, Inc.
3711 Kennett Pike, Suite 210
Wilmington, DE 19807

Dan Rattay

+1 302 661 6702 • dan.rattay@cbre.com

Paul Touhey

+1 610 251 5126 • paul.touhey@cbre.com

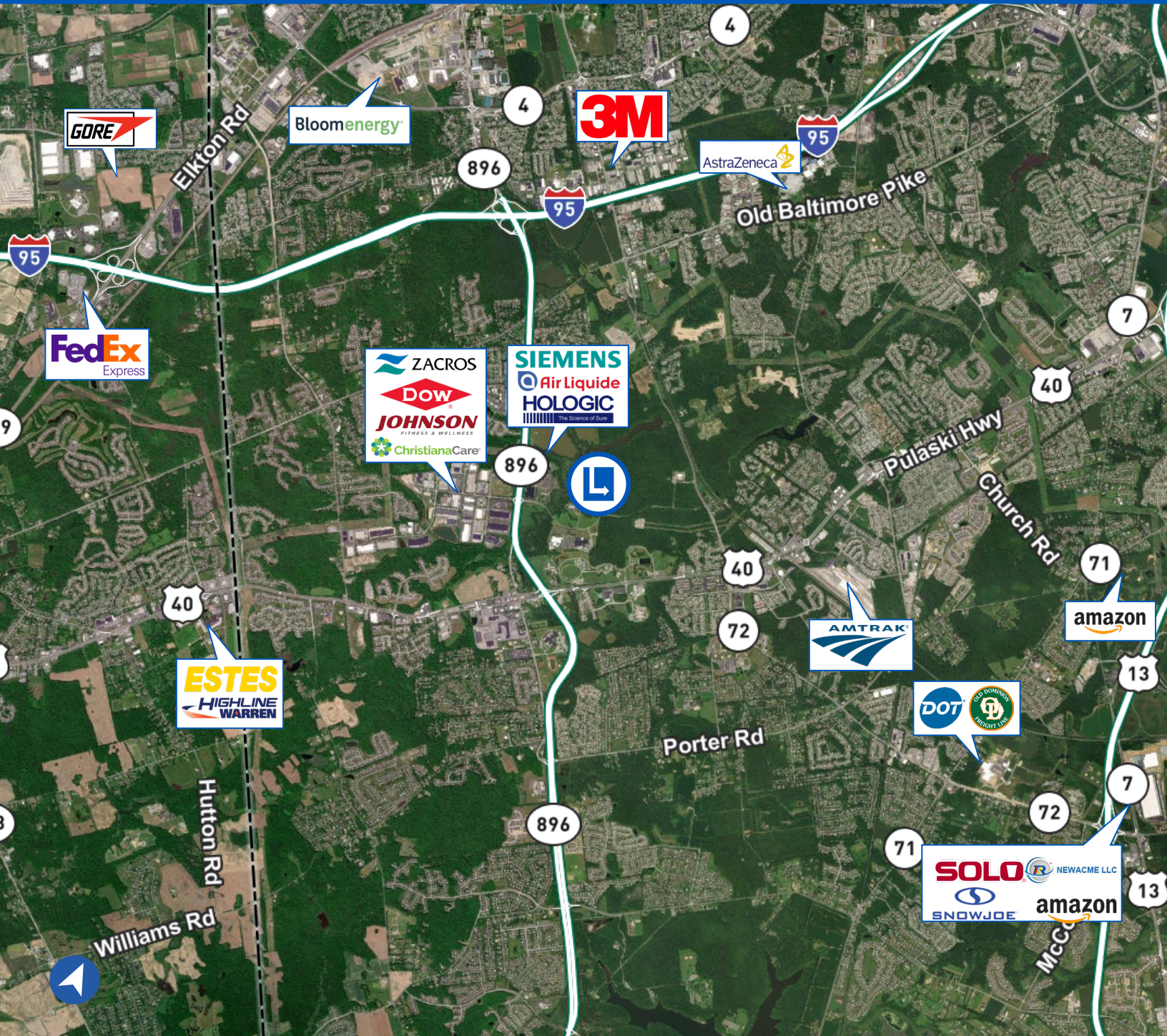


LOGISTICS[®]
PROPERTY
CO

FIRST STATE LOGISTICS PARK

700 Dusk Run Road, Newark, Delaware 19702

www.firststatelogisticspark.com



CBRE

CBRE, Inc.
3711 Kennett Pike, Suite 210
Wilmington, DE 19807

Dan Rattay

+1 302 661 6702 • dan.rattay@cbre.com

Paul Touhey

+1 610 251 5126 • paul.touhey@cbre.com

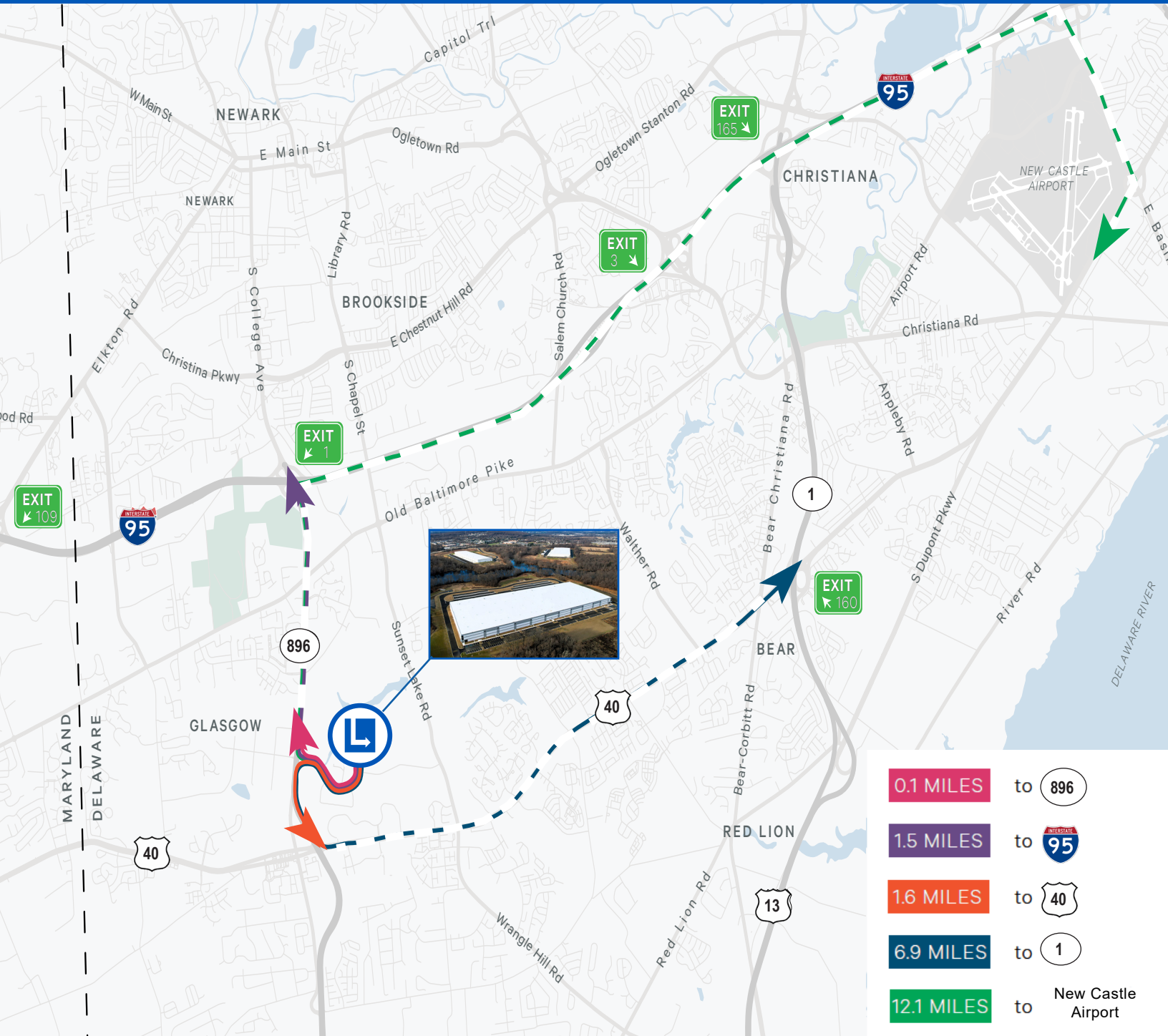


LOGISTICS[®]
PROPERTY
CO

FIRST STATE LOGISTICS PARK

2051 Old Cooches Bridge Road, Newark, Delaware 19702

www.firststatelogisticspark.com



CBRE

CBRE, Inc.
 3711 Kennett Pike, Suite 210
 Wilmington, DE 19807

© 2024 CBRE, Inc. All rights reserved. This information has been obtained from sources believed reliable, but has not been verified for accuracy or completeness. You should conduct a careful, independent investigation of the property and verify all information. Any reliance on this information is solely at your own risk. CBRE and the CBRE logo are service marks of CBRE, Inc. All other marks displayed on this document are the property of their respective owners, and the use of such logos does not imply any affiliation with or endorsement of CBRE. Photos herein are the property of their respective owners. Use of these images without the express written consent of the owner is prohibited.