



LOGISTICS[®]
PROPERTY
CO

3711 SOUTH ASHLAND AVENUE

3711 South Ashland Avenue, Chicago, IL 60609

UNDER ROOF



BUILDING/SITE INFORMATION

- 137,922 sf (divisible)
- Office to suit
- ±6.42 acres
- 32' clear height
- 28 exterior loading docks
- Two drive-in doors
- 50' x 55'8" columns (60' speed bay)
- 100% premium Ductilcrete concrete paving
- 138 car parking spaces
- Excellent location near I-55 and I-90/94
- Close to public transit
- Strong local labor pool
- Proposed Class 6B
- 11th Ward Alderman Thompson

LEE & ASSOCIATES
 COMMERCIAL REAL ESTATE SERVICES

Lee & Associates
 9450 West Bryn Mawr Avenue
 Suite 550
 Rosemont, IL 60018

Tim McCahill
 +1 773 355 3044 • tmccahill@lee-associates.com

Terry Grapenthin
 +1 773 355 3042 • tgrape@lee-associates.com



LOGISTICS[®]
PROPERTY
CO

3711 SOUTH ASHLAND AVENUE

3711 South Ashland Avenue, Chicago, IL 60609



NOTE:
AT ALL DRIVEWAYS TO BE REMOVED,
PUBLIC WAY WORK PERMIT IS REQUIRED
FROM CDOT TO REMOVE THE EXISTING
DRIVEWAY AND RETURN THE PARKWAY.

LEE & ASSOCIATES
COMMERCIAL REAL ESTATE SERVICES

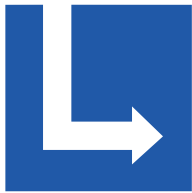
Lee & Associates
9450 West Bryn Mawr Avenue
Suite 550
Rosemont, IL 60018

Tim McCahill

+1 773 355 3044 • tmccahill@lee-associates.com

Terry Grapenthin

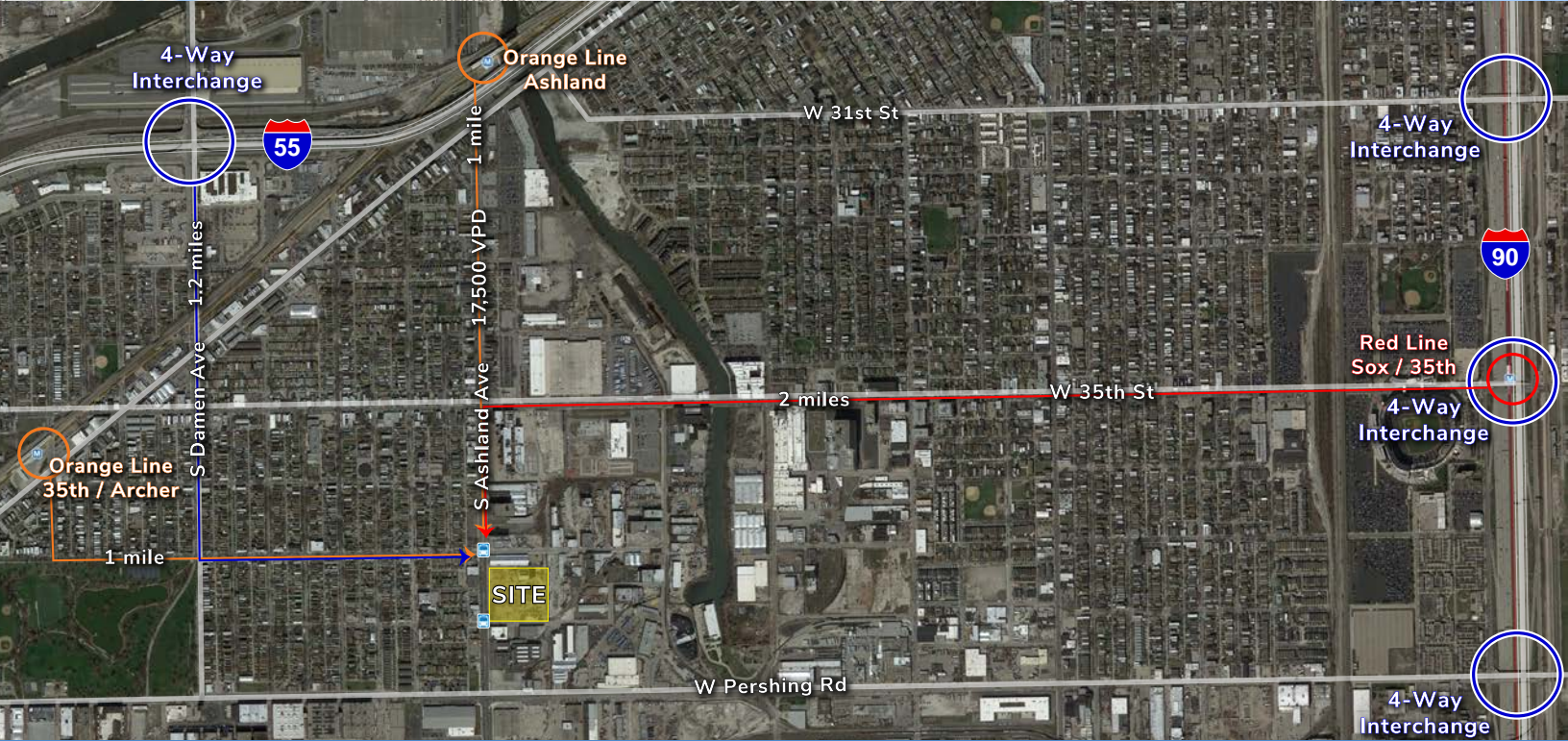
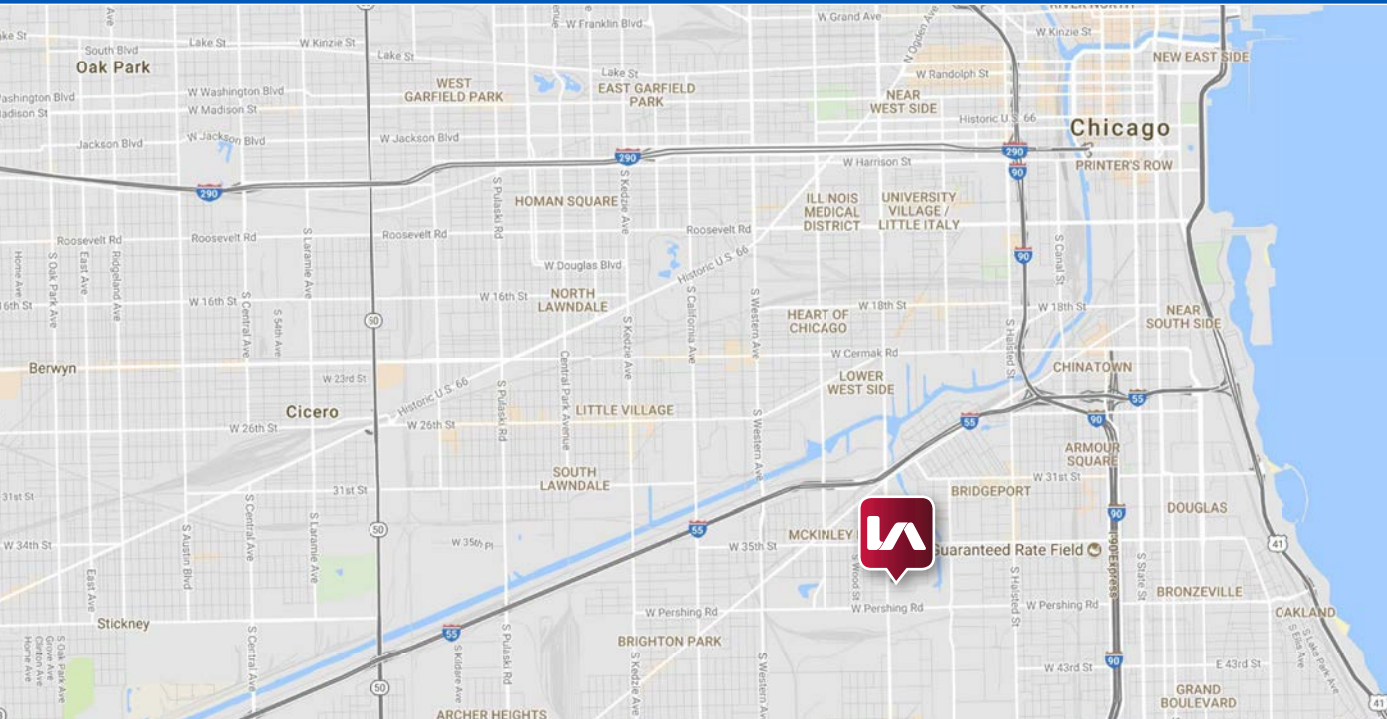
+1 773 355 3042 • tgrape@lee-associates.com



LOGISTICS[®]
PROPERTY
CO

3711 SOUTH ASHLAND AVENUE

3711 South Ashland Avenue, Chicago, IL 60609



LEE & ASSOCIATES
 COMMERCIAL REAL ESTATE SERVICES

Lee & Associates
 9450 West Bryn Mawr Avenue
 Suite 550
 Rosemont, IL 60018

Tim McCahill
 +1 773 355 3044 • tmccahill@lee-associates.com

Terry Grapenthin
 +1 773 355 3042 • tgrape@lee-associates.com