



**LOGISTICS<sup>®</sup>**  
PROPERTY  
CO

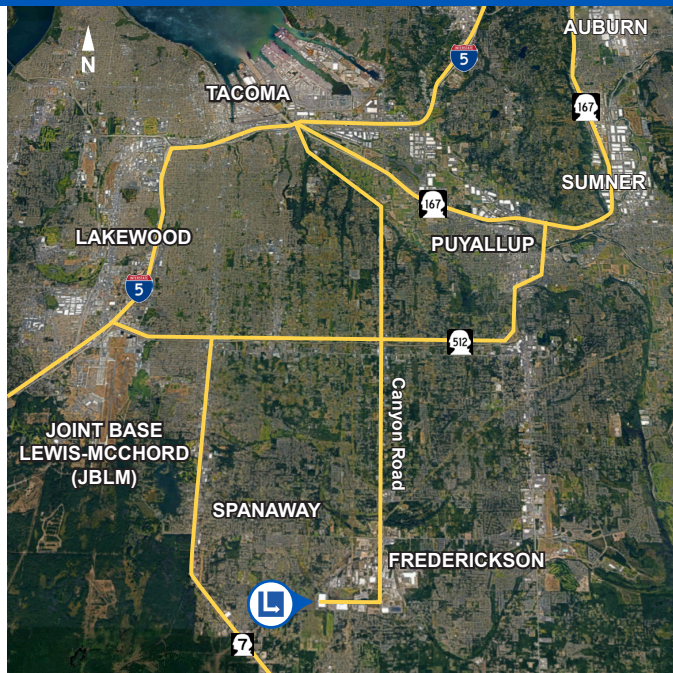
# FREDERICKSON ONE B1

38th Avenue East and 200th Street East, Spanaway, WA 98387  
fredericksonone.com



## BUILDING 1

- 478,235 sf (divisible)
- Building dimensions: 420' x 1120'
- 28.3 acres
- Typical bay size of 50' x 56' with 60' speedbay
- 36' clear height
- 45 exterior loading docks 9' x 10'
- 2 drive-in doors 12' x 14'
- 332 auto stalls
- 110 trailer parks
- ESFR sprinkler system
- Building completion: May 2020



### APPROXIMATE DISTANCE

INTERSTATE 5	12.5 MI
PORT OF TACOMA	15 MI
PORTLAND	148 MI
SEATAC INT'L AIRPORT	35 MI
PORT OF SEATTLE	45 MI



**NEIL WALTER**  
COMPANY



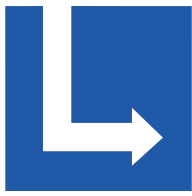
**Neil Walter Company**  
1940 East D Street  
Suite 100  
Tacoma, WA 98421

**Scott Price**  
+1 253 779 2419  
sprice@neilwalter.com

**Kermit Jorgensen**  
+1 206 787 1475  
kjorgensen@neilwalter.com

**Pacific Rim**  
Real Estate Group, Inc.  
PO Box 1927  
Eatonville, WA 98328

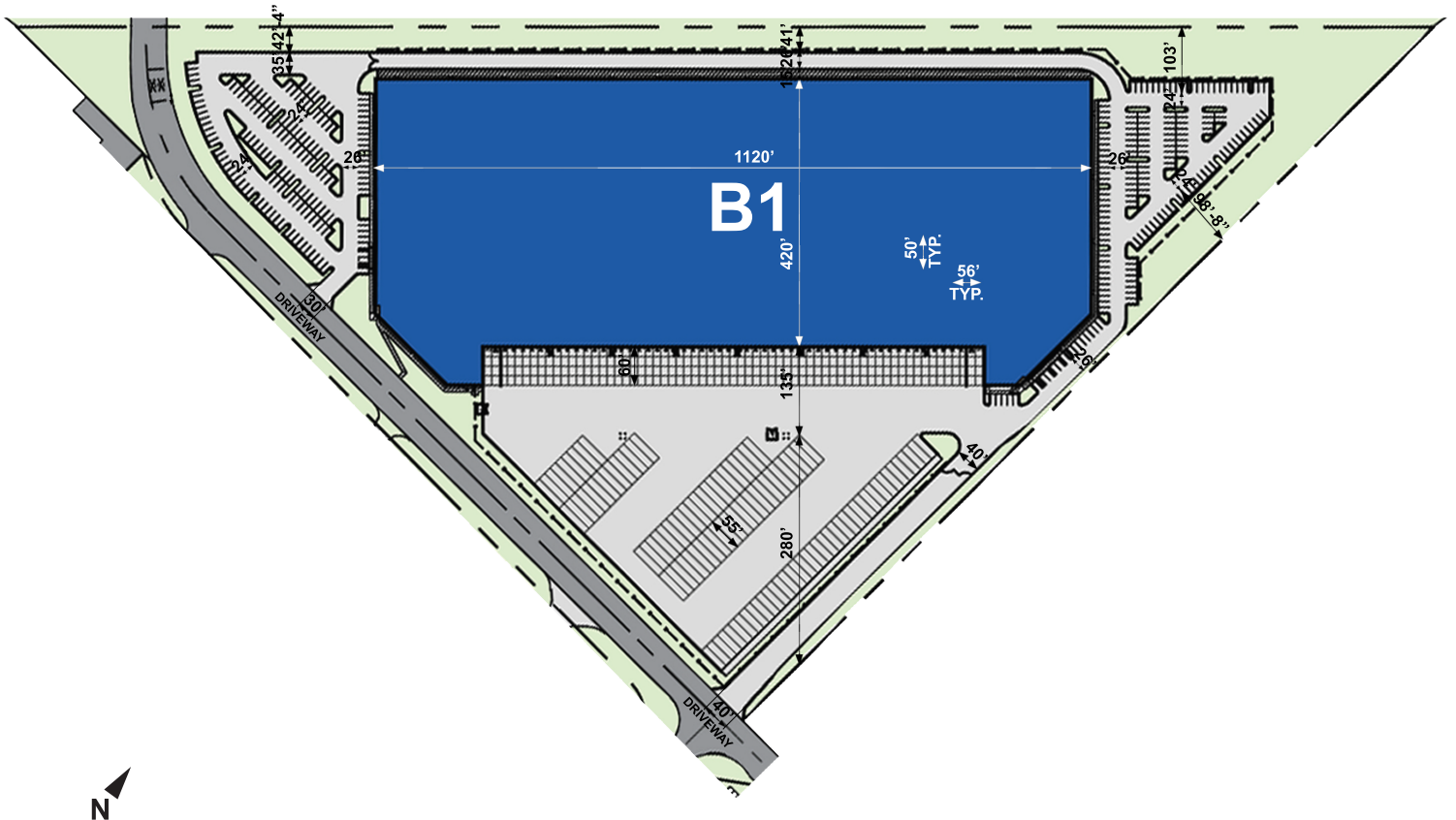
**Mike Avila**  
+1 253 961 4305  
avila@pacrimre.net



**LOGISTICS<sup>®</sup>**  
**PROPERTY**  
**CO**

# FREDERICKSON ONE B1

38th Avenue East and 200th Street East, Spanaway, WA 98387  
 fredericksonone.com



LEGEND WITH BLDG SF  
 B1 = 478,235 SF



**NEIL WALTER**  
 COMPANY



**Neil Walter Company**  
 1940 East D Street  
 Suite 100  
 Tacoma, WA 98421

**Scott Price**  
 +1 253 779 2419  
 sprice@neilwalter.com

**Kermit Jorgensen**  
 +1 206 787 1475  
 kjorgensen@neilwalter.com

**Pacific Rim**  
**Real Estate Group, Inc.**  
 PO Box 1927  
 Eatonville, WA 98328

**Mike Avila**  
 +1 253 961 4305  
 avila@pacrimre.net